

# Omnipliance Ultra

LiveAction™

Omnipliance Ultra™ provides powerful, precise, and affordable packet capture and analytic solutions for any size network up to 100G.

## The Challenge

Today's high-speed networks transmit high volumes of data at speeds beyond the recording and analytical capacities of most network recording and monitoring tools. There's more data than ever on business networks, but less precision in network analysis. Organizations are counting on their networks more than ever before, but they have less confidence in network monitoring and troubleshooting. How can network monitoring and troubleshooting be made more actionable?

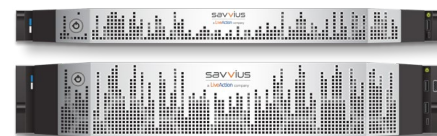
## The Solution

Omnipliance Ultra, an industry-leading packet capture and analysis appliance, enables real-time and post-event analytics at up to 20 Gbps. Using LiveAction packet intelligence, Omnipliance Ultra gives IT engineers the power to resolve network and application performance issues on 1/10/40/100 Gigabit Ethernet, 802.11ac WLAN, VoIP, and video-over-IP networks. Omnipliance Ultra features both powerful network recording for capturing terabytes of traffic with no packet loss, and award-winning Omnipeek for performing real-time analysis of live network traffic and forensic network analysis of recorded traffic. Built into the Omnipliance Ultra C110 is the capability to capture tunneled wireless traffic from WLAN controllers, enabling you to monitor, analyze, store, and troubleshoot multi-Gigabit speed 802.11ac traffic.

Additionally, Omnipliance Ultra includes the Spotlight feature for web-based network monitoring, using a single capture for both monitoring and packet storage. Spotlight assembles and applies expert analytics to every conversation on the network, even with over a million active flows and 20 Gbps of traffic. The conversations that represent potential issues are highlighted, including specific information required for troubleshooting. If desired, a single click brings up the associated packets for detailed root-cause analysis. Spotlight features both pre-built and user-defined browser-based views for real-time network analytics, fluid navigation among network locations in an unlimited hierarchy, and streaming analytics for baselines and long-term views of network performance.

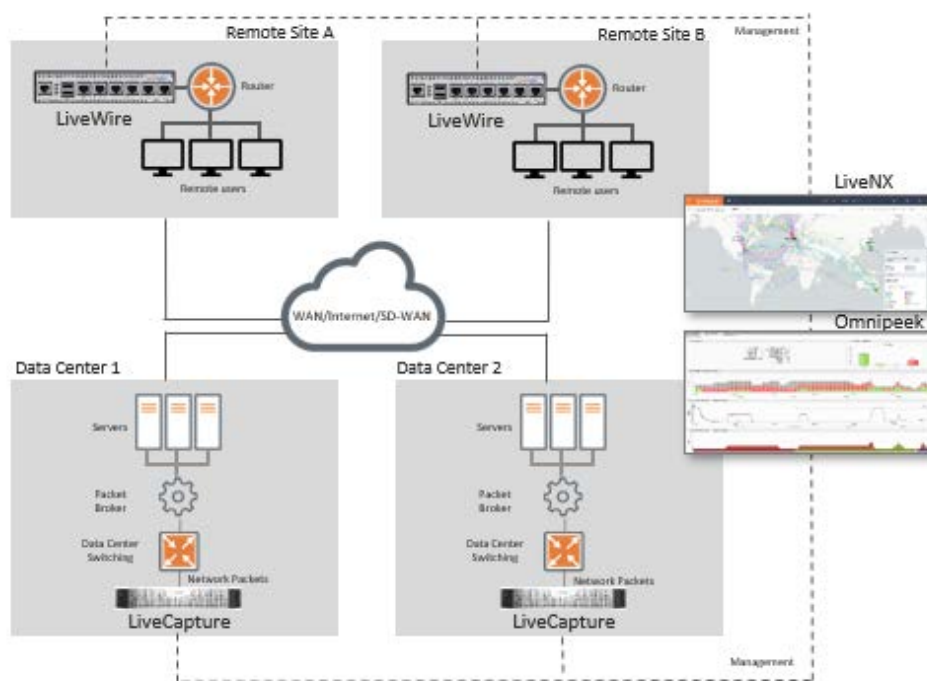
## Enterprise-wide network monitoring, packet capture, and analysis solution

LiveAction solutions are comprised of the Omnipliance network packet capture and analysis appliances, and Omnipeek® network analysis software. Each Omnipliance continuously captures, analyzes, and stores data across the entire enterprise surface.



## With Omnipliance Ultra, you can:

- Solve network performance issues with proven workflows and analytics based on years of LiveAction network troubleshooting experience
- Keep business-critical services like Voice over IP (VoIP) running smoothly
- Perform transactional analysis with the 'ultimate audit trail' for transactions, such as e-commerce transactions
- Find proof of security attacks, including data breaches, suggested by alerts raised by other security tools
- Realize superior power and precision at a price significantly lower than other network forensics products
- See issues of network and application latency, communications quality, and capacity
- Drill down to the conversations you need to see and get the information you need to know
- Configure custom dashboard views that highlight critical network performance



	Omnipliance Ultra T310	Omnipliance Ultra M210	Omnipliance Ultra C110	Extended Storage for Omnipliance Ultra T310
<b>Network Traffic</b>	1G/10G/40G/100G Fully-Utilized Networks	1G/10G Networks	1G/10G Networks	N/A
<b>Storage Capacity</b>	128 TB (Extended storage available)	64 TB	16 TB	96 TB per extended storage appliance
<b>Adapter Options</b>	Up to three 1G/10G/40G/100G	Up to three 1G/10G	One 1G/10G	N/A
<b>Space Required</b>	2U rack mountable	2U rack mountable	1U rack mountable	2U rack mountable
<b>Real-Time Monitoring*</b>	Up to 20 Gbps	Up to 12 Gbps	Up to 4 Gbps	N/A
<b>Simultaneous Forensic Capture*</b>	Up to 20 Gbps	Up to 12 Gbps	Up to 4 Gbps	N/A

\*With Spotlight Enabled

LiveAction simplifies the management of complex networks by providing real-time visualization and analytics for SD-WAN, Voice, Video, and Quality of Service monitoring. Our platforms are LiveNX™ designed for large enterprises and LiveSP™ designed for Service Providers. LiveAction offers Omnipliance and Omnipeek for powerful packet capture and analytics, providing the unparalleled visibility needed to anticipate and resolve network performance issues. Learn more at [www.liveaction.com](http://www.liveaction.com).

LiveAction  
3500 West Bayshore Rd  
Palo Alto, CA 94303

Phone + eFAX: +1 888-881-1116  
Email: [sales@liveaction.com](mailto:sales@liveaction.com)  
Website: [www.liveaction.com](http://www.liveaction.com)